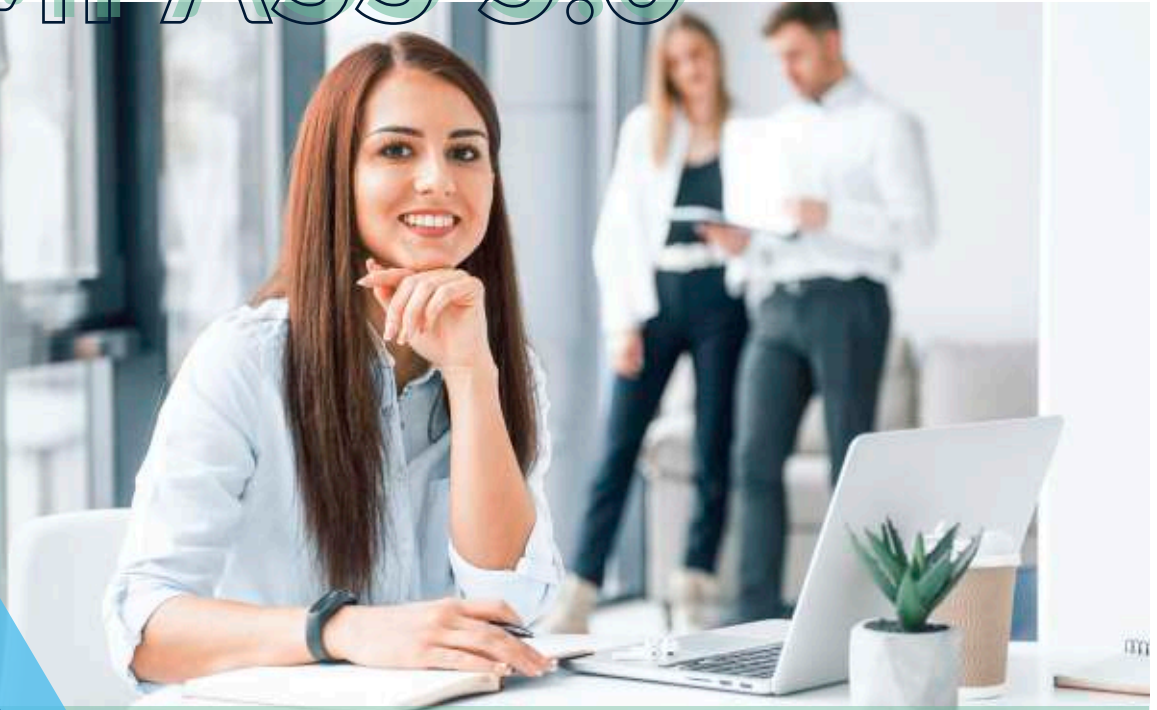


ZYTO™

# COMPASS 5.0



## The better way to choose oils & supplements



- Recommend products with confidence
- Increase product knowledge
- Empower fellow health advocates
- Assist clients with wellness goals
- Expand product sales
- Boost client base and retention

### Key features of the Compass 5.0 software

**Inventory** - Select only items you want to scan

**Quick scanning** - Scan entire product line in minutes

**Biomarkers** - Scan more than 120 key body biomarkers

**6 reports** - See product responses and educate clients

**Report header** - Add customized header to reports

**Top oil** - Scan for client's preferred oil for the day

# ZYTO COMPASS 5.0

Utilizing the same biocommunication technology trusted by thousands of practitioners, the Compass 5.0 software quickly and accurately identifies supplements and essential oils in your product line for which the body shows coherence, or what we call biological preference.

Additionally, the Compass 5.0 scans more than 120 key biomarkers representing organs and other systems in the body. Biomarker responses that fall outside of the baseline range are then scanned against the client's most biologically coherent products.

Product responses gathered from the Compass 5.0 Biosurvey are organized into a report showing the top items and how many biomarkers each item brought into range. Product descriptions are also included to help you further educate yourself and your clients on the products you carry.

Additional Compass 5.0 reports show the responses of all products scanned, providing comprehensive data for even greater insight.

## Product Company Libraries

The Compass 5.0 offers our 4 most popular product lines to choose from: Young Living, Nature's Sunshine, dōTERRA, and Youngevity. Using the Compass 5.0 biosurvey or all-new Oil of the Day Biosurvey, you can choose to scan your entire product line, specific categories, or only specific items you select. And with continuous product updates, you'll never have to worry about keeping your product library updated as product lines change.

## For more information:

### US & Canada

Phone: 1-801-224-7199 (opt. 2)

Toll Free (US Only): 1-866-369-2265 (opt. 2)

Email: sales@zyto.com

### International

Phone: + (353) 1 539 0141

Email: international@zyto.com

zyto.com

## Customer Testimonials

"Love the accuracy of the ZYTO Compass! It makes taking charge of my health easy!"

–Rebecca Price

"Been using the ZYTO scan for many years on my family and team members. Love it. So accurate."

– Donna Jackson

"I love our ZYTO Compass! It is so helpful in making healthy decisions."

–Carol Sue Richhart

## Software Features

Enhanced Compass biosurvey

Personalized reports

Inventory management

Continuous updates

Offline operation

HIPAA-compliant data backup

Portable

## System Requirements

Windows 10 or 11 Operating System

Intel Core i3 CPU or higher

4 GB RAM or higher

256 GB Hard Drive

(20 GB minimum) w/ 50 GB available for ZYTO software

USB Port (2.0 minimum)

5-10 Mbps Internet (Up/Down)

\*Not compatible with Mac or Windows running S mode

The ZYTO Hand Cradle has been cleared by the FDA for the measurement of galvanic skin response. ZYTO software has not undergone FDA review for effectiveness. ZYTO technologies are not intended to be used in the diagnosis, cure, treatment, mitigation, or prevention of any disease or medical condition, but only provide general wellness information. The diagnosis and treatment of medical conditions should only be undertaken by qualified medical professionals. ZYTO products have not been the subject of controlled clinical trials to establish their effectiveness and their use is not a generally accepted medical practice by the traditional medical establishment. If you have any questions regarding ZYTO technology or our products please contact us at info@zyto.com.

© 2022 ZYTO. All rights reserved. MKD-2. 10001.D